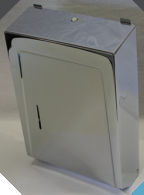
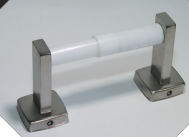


Product Catalog



CWECO

Commercial Washroom Equipment Company INC.



1156 W. 135th Street Gardena, CA 90247
Phone: 800-292-9326 310-538-9440
Fax: 800-232-9326 310-715-9188
cwecosales@gmail.com www.cwecoinc.com

Table of Contents

Shower Rods and Flanges.....	3
Zinc Die-Cast Bathroom Accessories.....	5
Stainless Steel Accessories.....	9
Commercial Bathroom Accessories.....	12
Ashtrays.....	16
Soap Dispensers.....	17
Grab Bars/Shelves/Mirrors.....	19

CWECO reserves the right to make changes and improvements in design without formal notice

Table of Contents



Commercial Washroom Equipment Company (CWECO)

is a formidable name in the field of washroom equipment. In 1966, David Gursky formed Saferail whose main business was to manufacture Grab Bars. Subsequently in 1975 the bath accessory product line was purchased in an agreement with Continental Manufacturing company and CWECO was formed. In the following years, Saferail and CWECO were marketed under their respective names, but as the product lines expanded to a full range catalog, the companies were combined and brought under the name CWECO.

CWECO features contemporary concealed mount bathware and combines the quality of plated Zamak with simple to install exposed-mount bathware. Our shower rods, grab bars, soap dispensers and complete line of hotel/motel and commercial washroom accessories are sleek, functional designs and intended to meet the most stringent standards for public facility usage.

We have a wide range of products aimed at catering the entire gamut of our customer needs. Our core competencies are Timely Delivery, Excellent Quality and Fair Pricing. Customer satisfaction is our main motto, and we strive to maximize it through innovative programs like dropshipments to job sites directly.





Item #101
*Adjustable Die-Cast
 Shower Rod Flange*
Dimensions: 1"



Item #103
*Die-Cast Extended
 Die-Cast
 Shower Rod Flange*
Exposed Mounting Screws
Dimensions: 1"



Item #107
*Steel Shower
 Rod Flange*
Concealed Mounting Screws
Dimensions: 1"



Item #CW107A
*Die-Cast Shower
 Rod Flange*
Concealed Mounting Screws
Dimensions: 1"



Item #CWCP
Curtain Pin
Nickel Plated



Item #CWCP-SS
Curtain Pin
Stainless Steel

Shower Rods and Flanges

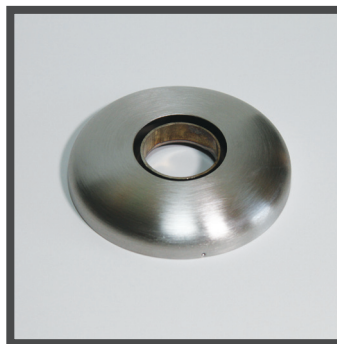
Shower Rods and Flanges



Item #104A
 Stainless Steel
 Shower Rod Flange
 Exposed Mounting Screws
 Dimensions: 1"



Item #105A
 Stainless Steel
 Shower Rod Flange
 Exposed Mounting Screws
 Dimensions: 1 1/4"



Item #108S
 Stainless Steel
 Shower Rod Flange
 Concealed Mounting Screws
 Dimensions: 1"



Item #109S
 Stainless Steel
 Shower Rod Flange
 Concealed Mounting Screws
 Dimensions: 1 1/4"



Item #112
 Stainless Steel
 Shower Rod
 Dimensions: 1" x .018" x 60"

Item #112A
 Stainless Steel
 Shower Rod
 Dimensions: 1" x .018" x 72"

Item #113
 Stainless Steel
 Shower Rod
 Dimensions: 1" x .035" x 60"

Item #113A
 Stainless Steel
 Shower Rod
 Dimensions: 1" x .035" x 72"

Item #114
 Stainless Steel
 Shower Rod
 Dimensions: 1" x .049" x 60"

Item #114A
 Stainless Steel
 Shower Rod
 Dimensions: 1" x .049" x 72"

Item #115
 Stainless Steel
 Shower Rod
 Dimensions: 1 1/4" x .049" x 60"

Item #115A
 Stainless Steel
 Shower Rod
 Dimensions: 1 1/4" x .049" x 72"

Please See Our Website at www.cwecoinc.com



Zinc Die - Cast Bathroom Accessories



Item #751B
Square Towel Bar Bracket
Use With: 3/4" Square Towel Bar
Towel Bars Available In Aluminum & Stainless Steel
Lengths: 18", 24", 30", 36"
Bracket: Chrome Plated Zamak (Zinc/Aluminum)
Screw Mount: Concealed
Projects: 3 3/4"



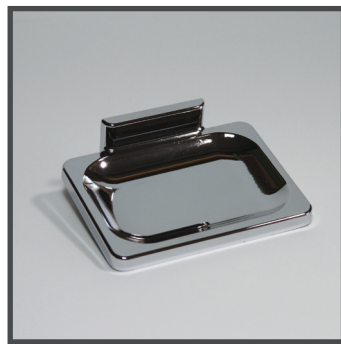
Item #753
Double Robe Hook
Chrome Plated Zamak (Zinc/Aluminum)
Screw Mount: Concealed
Projects: 1 1/2"



Item #754
Single Robe Hook
Chrome Plated Zamak (Zinc/Aluminum)
Screw Mount: Concealed
Projects: 2 1/4"



Item #757
Toothbrush & Tumbler Holder
Chrome Plated Zamak (Zinc/Aluminum)
Screw Mount: Concealed
Projects: 3"



Item #759
Soap Dish
Chrome Plated Zamak (Zinc/Aluminum)
Screw Mount: Concealed
Projects: 3"



Item #761
Toilet Tissue Holder
Roller: Chrome Plated Plastic
Brackets: Chrome Plated Zamak (Zinc/Aluminum)
Screw Mount: Concealed
Projects: 3 1/4"

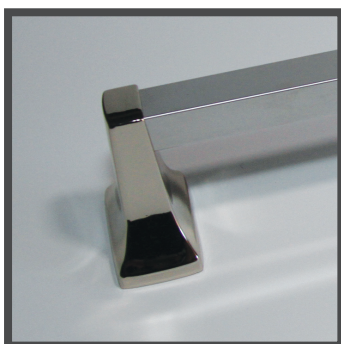
Zinc Die - Cast
 Bathroom Accessories



Item #762

Toilet Tissue Holder

Roller: White Plastic
Brackets: Chrome Plated Zamak (Zinc/Aluminum)
Screw Mount: Concealed
Projects: 3 1/4"



Item #701B

Square Towel Bar Bracket

Use With: 3/4" Square Towel Bar
Towel Bars Available In Aluminum & Stainless Steel
Lengths: 18", 24", 30", 36"
Bracket: Chrome Plated Zamak (Zinc/Aluminum)
Screw Mount: Concealed
Projects: 3"



Item #703

Double Robe Hook

Chrome Plated Zamak (Zinc/Aluminum)
Screw Mount: Concealed
Projects: 1 11/16"



Item #705B

Square Towel Bar Bracket

Use With: 3/4" Square Towel Bar
Towel Bars Available In Aluminum & Stainless Steel
Lengths: 18", 24", 30", 36"
Bracket: Chrome Plated Zamak (Zinc/Aluminum)
Screw Mount: Concealed
Projects: 3 5/16"



Item #711

Toilet Tissue Holder

Roller: Chrome Plated Plastic
Brackets: Chrome Plated Zamak (Zinc/Aluminum)
Screw Mount: Concealed
Projects: 3"



Item #712

Toilet Tissue Holder

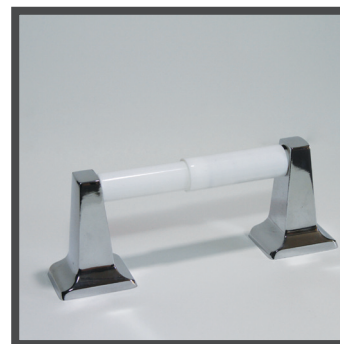
Roller: White Plastic
Brackets: Chrome Plated Zamak (Zinc/Aluminum)
Screw Mount: Concealed
Projects: 3"



Item #721

Toilet Tissue Holder

Roller: Chrome Plated Plastic
Brackets: Chrome Plated Zamak (Zinc/Aluminum)
Screw Mount: Concealed
Projects: 3 5/16"



Item #722

Toilet Tissue Holder

Roller: White Plastic
Brackets: Chrome Plated Zamak (Zinc/Aluminum)
Screw Mount: Concealed
Projects: 3 5/16"



Item #727

Toothbrush and Tumbler Holder

Chrome Plated Zamak (Zinc/Aluminum)
Screw Mount: Concealed
Projects: 3 3/8"



Item #729

Soap Dish

Chrome Plated Zamak (Zinc/Aluminum)
Screw Mount: Concealed
Projects: 3 3/8"



6





7



Item #714

Towel Ring

Lucite Ring: 6" x 4 7/8"

Bracket: Chrome Plated Zamak (Zinc/Aluminum)

Screw Mount: Concealed

Projects: 1 3/4"



Item #716

Towel Ring

Metal Ring: 6 1/4" x 6 1/8"

Bracket: Chrome Plated Zamak (Zinc/Aluminum)

Screw Mount: Concealed

Projects: 1 3/4"



Item #361

Toilet Tissue Holder

Roller: Chrome Plated Plastic

Brackets: Chrome Plated Zamak (Zinc/Aluminum)

Screw Mount: Concealed

Projects: 3"



Item #362

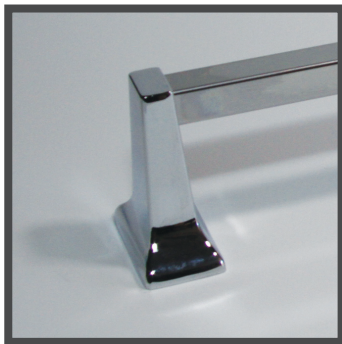
Toilet Tissue Holder

Roller: White Plastic

Brackets: Chrome Plated Zamak (Zinc/Aluminum)

Screw Mount: Concealed

Projects: 3"



Item #351B

Square Towel Bar Bracket

Use With: 3/4" Square Towel Bar

Towel Bars Available

In Aluminum & Stainless Steel

Lengths: 18", 24", 30", 36"

Bracket: Chrome Plated Zamak (Zinc/Aluminum)

Screw Mount: Concealed

Projects: 3"



Item #651B

Square Towel Bar Bracket

Use With: 5/8" Square Towel Bar

Towel Bars Available

In Aluminum & Stainless Steel

Lengths: 18", 24", 30", 36"

Bracket: Chrome Plated Zamak (Zinc/Aluminum)

Screw Mount: Concealed

Projects: 3"



Item #665

Toilet Tissue Holder

Roller: Chrome Plated Plastic

Brackets: Chrome Plated Zamak (Zinc/Aluminum)

Screw Mount: Concealed

Projects: 3"



Item #664

Toilet Tissue Holder

Roller: White Plastic

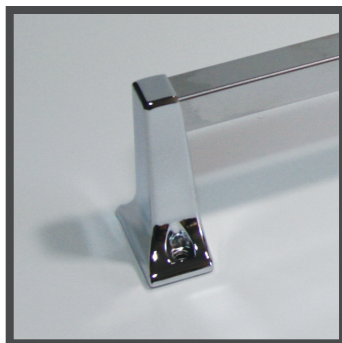
Brackets: Chrome Plated Zamak (Zinc/Aluminum)

Screw Mount: Concealed

Projects: 3"

CWECO reserves the right to make changes and improvements in design without formal notice





Item #851B

Square Towel Bar Bracket

Use With: 5/8" Square Towel Bar

Towel Bars Available

In Aluminum & Stainless Steel

Lengths: 18", 24", 30", 36"

Bracket: Chrome Plated Zamak
(Zinc/Aluminum)

Screw Mount: Exposed

Projects: 2 3/4"



Item #853

Single Robe Hook

Chrome Plated Zamak

(Zinc/Aluminum)

Screw Mount: Exposed

Projects: 1 3/8"



Item #854

Double Robe Hook

Chrome Plated Zamak

(Zinc/Aluminum)

Screw Mount: Exposed

Projects: 1 1/2"



Item #857

Soap Dish

Chrome Plated Zamak

(Zinc/Aluminum)

Screw Mount: Exposed

Projects: 2 15/16"



Item #875

*Toothbrush and
Tumbler Holder*

Chrome Plated Zamak

(Zinc/Aluminum)

Screw Mount: Exposed

Projects: 2 15/16"



Item #860

*Toothbrush and
Tumbler Holder*

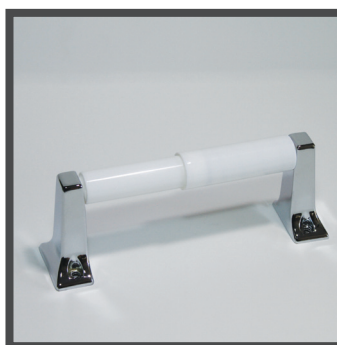
Chrome Plated Zamak

(Zinc/Aluminum)

Tray: Clear Plastic

Screw Mount: Exposed

Projects: 2 3/4"



Item #864

Toilet Tissue Holder

Roller: White Plastic

Brackets: Chrome Plated Zamak
(Zinc/Aluminum)

Screw Mount: Exposed

Projects: 2 3/4"



Item #865

Toilet Tissue Holder

Roller: Chrome Plated Plastic

Brackets: Chrome Plated Zamak
(Zinc/Aluminum)

Screw Mount: Exposed

Projects: 2 3/4"



Item #866

Towel Ring

Lucite Ring: 6" x 4 3/4"

Bracket: Chrome Plated Zamak
(Zinc/Aluminum)

Screw Mount: Exposed

Projects: 1 11/16"



Item #07-PR

White Plastic Roller

Replacement Roller for Items:

712, 722, 762, 362, 664, 864

Item #07-CR

Chrome Plated Plastic Roller

Replacement Roller for Items:

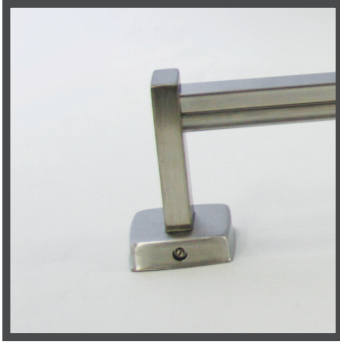
711, 721, 761, 361, 665, 865

**Towel Bars
available
separately**





Satin Finish



Item #5151B

Satin Square Towel Bar Bracket

Use With: 3/4" Square Towel Bar
Lengths: 18", 24", 30", 36"
Bracket: 304 Type Stainless Steel
Finish: Satin
Screw Mount: Concealed
Projects: 3 1/2"



Item #5153

Satin Single Robe Hook

304 Type Stainless Steel
Finish: Satin
Screw Mount: Concealed
Projects: 1 7/8"



Item #5154

Satin Double Robe Hook

304 Type Stainless Steel
Finish: Satin
Screw Mount: Concealed
Projects: 2 1/4"



Item #5157

Satin Toothbrush and Tumbler Holder

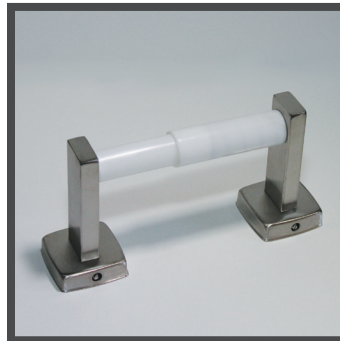
304 Type Stainless Steel
Finish: Satin
Screw Mount: Concealed
Size: 4 1/4" x 3 1/8"
Projects: 4 1/4"



Item #5159

Satin Soap Dish

304 Type Stainless Steel
Finish: Satin
Screw Mount: Concealed
Size: 4 1/4" x 3"
Projects: 4 1/4"



Item #5161

Satin Toilet Tissue Holder

Roller: White Plastic
Brackets: 304 Type Stainless Steel
Finish: Satin
Screw Mount: Concealed
Projects: 3 1/4"

Stainless Steel Bathroom Accessories

Stainless Steel Bathroom Accessories



Item #5161C

*Satin Toilet
Tissue Holder*

Roller: Chrome Plated Plastic
Brackets: 304 Type Stainless Steel
Finish: Satin
Screw Mount: Concealed
Projects: 3 1/4"



Item #07-PR

*White Plastic Roller
Replacement Roller for
Item #5161*

Item #07-CR

*Chrome Plated
Plastic Roller
Replacement Roller for
Item #5161C*



Item #5166

Satin Towel Ring
304 Type Stainless Steel
Finish: Satin
Screw Mount: Concealed
Projects: 2 3/4"



Item #5167

Satin Towel Pin
304 Type Stainless Steel
Finish: Satin
Screw Mount: Concealed
Projects: 4 3/4"

Brite Finish



Item #B5151B

*Brite Square Towel
Bar Bracket*

Use With: 3/4" Square Towel Bar
Lengths: 18", 24", 30", 36"
Bracket: 304 Type Stainless Steel
Finish: Brite
Screw Mount: Concealed
Projects: 3 1/2"



Item #B5153

Brite Single Robe Hook
304 Type Stainless Steel

Finish: Brite
Screw Mount: Concealed
Projects: 1 7/8"



Item #B5154

*Brite Double
Robe Hook*
304 Type Stainless Steel

Finish: Brite
Screw Mount: Concealed
Projects: 2 1/4"



Item #B5157

*Brite Toothbrush and
Tumbler Holder*
304 Type Stainless Steel

Finish: Brite
Screw Mount: Concealed
Size: 4 1/4" x 3 1/8"
Projects: 4 1/4"



Item #B5159
Brite Soap Dish
304 Type Stainless Steel
Finish: Brite
Screw Mount: Concealed
Size: 4 1/4" x 3"
Projects: 4 1/4"



Item #B5161
Brite Toilet Tissue Holder
Roller: White Plastic
Brackets: 304 Type Stainless Steel
Finish: Brite
Screw Mount: Concealed
Projects: 3 1/4"



Item #B5161C
Brite Toilet Tissue Holder
Roller: Chrome Plated Plastic
Brackets: 304 Type Stainless Steel
Finish: Brite
Screw Mount: Concealed
Projects: 3 1/4"



Item #07-PR
White Plastic Roller Replacement Roller for Item #B5161

Item #07-CR
Chrome Plated Plastic Roller Replacement Roller for Item #B5161C



Item #B5166
Brite Towel Ring
304 Type Stainless Steel
Finish: Brite
Screw Mount: Concealed
Projects: 2 3/4"



Item #B5167
Brite Towel Pin
304 Type Stainless Steel
Finish: Brite
Screw Mount: Concealed
Projects: 4 3/4"

Towel Bars available separately

CWECO reserves the right to make changes and improvements in design without formal notice

Commercial Bathroom Accessories

Commercial
Bathroom Accessories



Item #CW22
Single Roll
Polished Chrome Plated Steel
Pilfer Proof Locking Device
Dimensions:
2 3/4" x 6" x 4 3/8"



Item #CW23
Double Roll Capacity
Polished Chrome Plated Steel
Pilfer Proof Locking Device
Dimensions:
2 3/4" x 12" x 4 3/8"



Item #CW815
Single Roll
Polished Chrome
Plated Zamak
Concealed Hinge at End
Tension Spring Controls
Tissue Flow
Dimensions:
2 7/16" x 5 1/2" x 4 5/16"



Item #CW830
Double Roll Capacity
Polished Chrome
Plated Zamak
Concealed Hinge at End
Tension Spring Controls
Tissue Flow
Dimensions:
2 7/16" x 10 1/2" x 4 5/16"



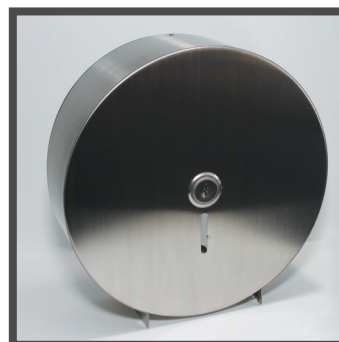
Item #CW813
Single Roll
Die Cast Aluminum
Pilfer Proof Locking Device
Dimensions:
1 3/4" x 6 1/2" x 4 1/4"



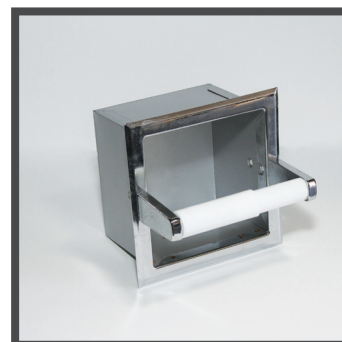
Item #CW814
Double Roll Capacity
Die Cast Aluminum
Pilfer Proof Locking Device
Dimensions:
1 3/4" x 12 5/8" x 4 1/4"



Item #CW813-PR
Replacement Roller
CW813 & CW814

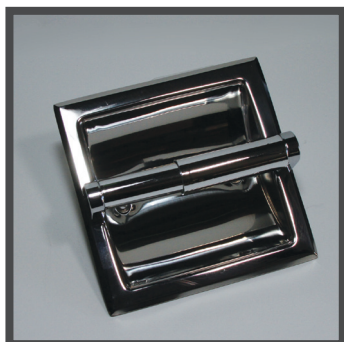


Item #CW2001SS
Jumbo Toilet Paper
Dispenser
Satin Finish
#304 Stainless Material
Dimensions: 14" x 4 1/2"



Item #CW870
Recessed Paper
Holder with Spare Roll
Overall Size: 6 1/4" x 6 1/4"
Wall Opening: 5 1/4" x 5 1/4" x 4"

Please See Our Website at www.cwecoinc.com



Item #212

*Recessed
Paper Holder*
**Stainless Steel Shell,
Chrome Plated Plastic Ears
Chrome Plated Plastic Roller**
Overall Size: 6 1/4" x 6 1/4"
Wall Opening: 5 1/4" x 5 1/4" x 4"



Item #213

*Recessed
Paper Holder*
**Stainless Steel Shell,
Chrome Plated Plastic Ears
White Plastic TP Roller**
Overall Size: 6 1/4" x 6 1/4"
Wall Opening: 5 1/4" x 5 1/4" x 4"



Item #07-PR
White Plastic Roller
**Replacement Roller for
Item #213**

Item #07-CR
*Chrome Plated
Plastic Roller*
**Replacement Roller for
Item #212**



Item #430
*Installation Clamp
with Spring*
For Use with Items 212 & 213



Item #CW401C
*Surface Mount
Toilet Tissue Dispenser*
Polished Chrome Plated Steel
Dimensions: 5" x 8 1/4" x 3"



Item #CWTTD-5
*Surface Mount
Toilet Tissue Dispenser*
Satin Stainless Steel
Dimensions:
5 7/8" x 10 7/8" x 6 1/8"



Item #CW630C
*For Use with Single
Fold Paper Towels*
Polished Chrome Plated Steel
Dimensions:
8 1/8" x 10 5/8" x 6 7/8"



Item #CW630W
*For Use with Single
Fold Paper Towels*
White Powder Coated Steel
Dimensions:
8 1/8" x 10 5/8" x 6 7/8"

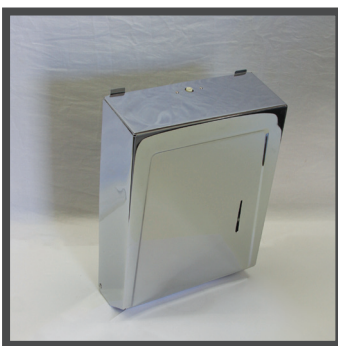
CWECO reserves the right to make changes and improvements in design without formal notice





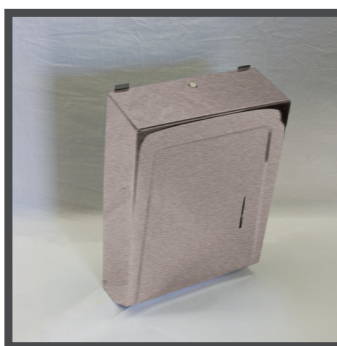
Item #CW990W

For Use with
Multi or C Fold
Paper Towels
White Powder Coated Steel
Dimensions:
15 3/8" x 11 1/4" x 4 1/16"



Item #CW991C

For Use with
Multi or C Fold
Paper Towels
Polished Chrome Plated Steel
Dimensions:
15 3/8" x 11 1/4" x 4 1/16"



Item#CW989SS

For Use with
Multi or C Fold
Paper Towels
Stainless Steel
Dimensions:
15 3/8" x 11 1/4" x 4 1/16"



Item #CW1474

Towel Shelf with
Drying Rod
& Support Brackets
Polished Chrome Plated Zamak
Lengths: 18" & 24"
Stainless Steel Tubes
Projects: 8 1/2"



Item #CW1480

Deluxe Towel
Supply Shelf with
Drying Rod
Polished Chrome Plated Steel
Lengths: 18" & 24"
Overall Height: 6 1/2"
Overall Depth: 9"



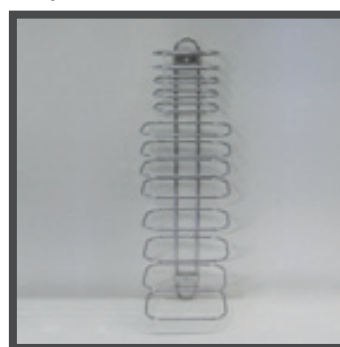
Item #CW1532

Two Guest
Towel Rack
Polished Chrome Plated Steel
Overall Height: 12 1/4"



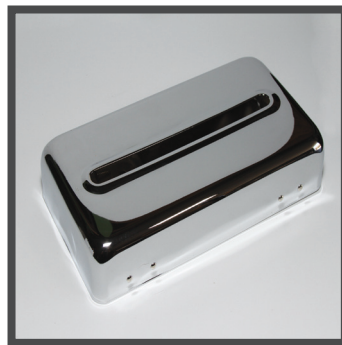
Item #CW1533

Three Guest
Towel Rack
Polished Chrome Plated Steel
Overall Height: 17 1/4"



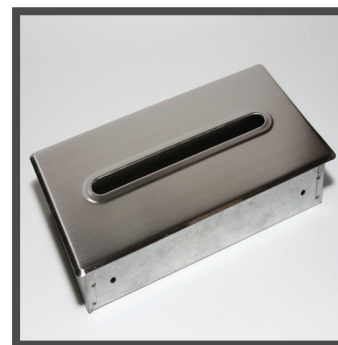
Item #CW1534

Four Guest
Towel Rack
Polished Chrome Plated Steel
Overall Height: 22 1/4"



Item #CW41SM

Facial Tissue Holder
Surface Mounted
Polished Chrome Plated Finish
Dimensions:
10 3/4" x 5 3/4" x 2"



Item#CW41RSS

Facial Tissue Holder
Recessed
Cover: Polished Stainless Steel
Dimensions:
11 3/4" x 6 1/4" x 2 5/8"



Item#CW41RST

Facial Tissue Holder
Recessed
Cover: Polished Chrome Plated Steel
Dimensions:
11 3/4" x 6 1/4" x 2 5/8"



Item #CW40R

Vanity Apron Facial
Tissue Dispenser
Galvanized Steel
Dimensions:
11 3/4" x 6" x 2 1/8"

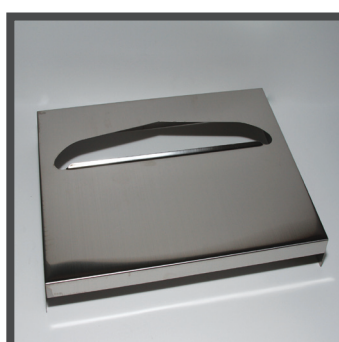




Item#CWHK250C
*Sanitary Napkin
 Receptacle*
Polished Chrome Plated Steel
Dimensions:
 8" x 11 1/4" x 4 1/4"



Item #CW45C
*Toilet Seat Cover
 Dispenser*
Polished Chrome Plated Steel
Dimensions:
 11 1/2" x 16 1/2" x 1 7/8"



Item #CWTSC-1
*Toilet Seat Cover
 Dispenser*
Satin Stainless Steel
Dimensions:
 15 1/4" x 11" x 2"



Item #CW528
Bottle Opener
Chrome Plated Steel
Dimensions:
 3 1/8" x 1 9/16"



Item #CW515
Mop & Broom Holder
Mounting Bracket: Polished
 Chrome Plated Steel
Cam: Serrated Hard Rubber
Dimensions:
 1/2" x 1 1/4" x 1 1/8"



Item#CW42RCL
Retractable Clothes Line
Line Extends: 8 1/2'
 Stainless Steel
Dimensions:
 3 9/16" x 1 1/8"

CWECO reserves the right to make changes and improvements in design without formal notice





Ashtrays



Item#CWAT9

*Surface Mounted
Ashtray*

**Polished Chrome
Plated Steel**

Dimensions:
5" Dia. x 4" Depth x 6" Height



Item#CWAT10-1

*Surface Mounted
Ashtray*

Polished Chrome Plated Steel

Dimensions:
4" Dia. x 2 1/2" Depth x 3" Height

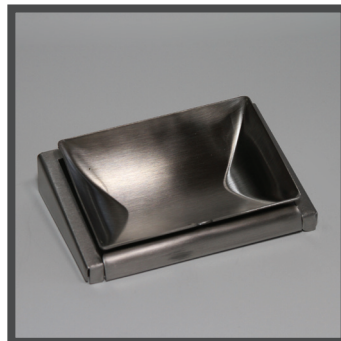


Item#CWAT11

*Surface Mounted
Wall Urn*

**Type 304 Stainless Steel
Heavy Duty Aluminum
Mounting Bracket**

Dimensions:
9 1/2" x 9 1/4" x 9 5/8"



Item#CWAT5040

Flip Ashtray

Stainless Steel

Dimensions: 5 1/8" x 1 1/2"

Projects: 3 3/4"





Soap Dispensers



Item # CW0132

*Tank Type Powder
Soap Dispenser*

Capacity: 32oz

Dimensions: 4 3/4" x 8 1/4" x 4"



Item # CW1

*Soap Dispenser
with Lather Valve*

Capacity: 12oz

Dimensions: 6" x 3 3/16" x 3 3/16"

Valve Projects: 2 11/16"



Item # CW11

*Soap Dispenser
with Liquid Valve*

Capacity: 12oz

Dimensions: 6" x 3 3/16" x 3 3/16"

Valve Projects: 2 11/16"



Item # CW16A

*Vertical Tank Type
Soap Dispenser*

Capacity: 40oz

Dimensions: 8 1/4" x 4 3/4" x 3"

Soap Dispensers





Item#CW58A

Horizontal Tank
Type Soap Dispenser

Capacity: 40oz
Dimensions: 8 1/4" x 4 3/4" x 3"



Item#CW29SVL

Basin Mount Soap
Dispenser

Capacity: 16oz
Spout: 4"



Item#CW29SVLM3

Basin Mount Soap
Dispenser

Capacity: 32oz
Spout: 4"



Item#CW64LB

Basin Mount Soap
Dispenser

Capacity: 32oz
Spout: 4"



Item#CW64LBM2

Basin Mount
Soap Dispenser

Capacity: 32oz
Spout: 6"



Item#CW500P

Push Up Liquid
Soap Dispenser

Capacity: 16oz
Dimensions: 6 1/2" x 3 3/4" x 5 1/4"



Item#CW72

Powder
Soap Dispenser

Capacity: 32oz
Dimensions: 7 1/4" x 4 3/8" x 4 5/8"



Item#CWB6

Soap Dispenser
with Liquid Valve

Capacity: 16oz
Dimensions: 6 1/2" x 3 3/8" x 5 1/8"





2600 Series Grab Bar
1 1/4" (Snap) Concealed Screw



2300 Series Grab Bar
1 1/4" Exposed Screw



3300 Series Grab Bar
1 1/2" Exposed Screw



3600 Series Grab Bar
1 1/2" (Snap) Concealed Screw

Commercial Grab Bars

1 1/4" x .049" Diameter Tubing (Type 304 Stainless Steel)

Exposed Screw Flange

Standard Lengths: 12" 18" 24" 30" 32" 36" 42" 48"

1 1/4" x .049" Diameter Tubing (Type 304 Stainless Steel)

(Snap) Concealed Screw Flange

Standard Lengths: 12" 18" 24" 30" 32" 36" 42" 48"

1 1/2" x .049" Diameter Tubing (Type 304 Stainless Steel)

Exposed Screw Flange

Standard Lengths: 12" 18" 24" 30" 32" 36" 42" 48"

1 1/2" x .049" Diameter Tubing (Type 304 Stainless Steel)

(Snap) Concealed Screw Flange

Standard Lengths: 12" 18" 24" 30" 32" 36" 42" 48"

Custom Bar Configuration

Straight with Center Post

120 Degree Angle

90 Degree Angle (One Wall Grab Bar)

Inside Corner Angle (Two Wall Grab Bar)

Shower Bar

Tub & Shower Bar

Wall to Floor

Wall to Floor with Socket

Wall to Floor with Center Post

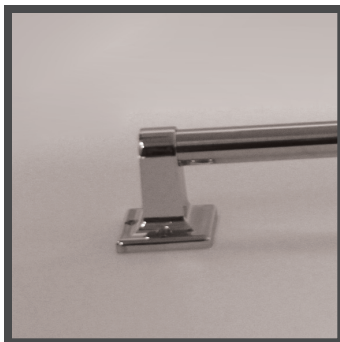
Toilet Straddle

Grab Bars/Shelves/Mirrors

NOTE: Bars can be manufactured to any custom configuration and size not listed above.

Grab Bars/Shelves/Mirrors





Item #555B
Residential Grab Bar Bracket

Polished Chrome Plated Zamak (Zinc/Aluminum)

Bracket: 2 1/2" x 2 1/2"

Projects: 2 11/16"



Item #555-18SS

Residential Grab Bars

Bar: 7/8" x .035" x 18" Round Stainless Steel Tubing

Bracket: Polished Chrome Plated Zamak (Zinc/Aluminum)

Bracket: 2 1/2" x 2 1/2"

Projects: 2 11/16"

Item #555-24SS

Residential Grab Bars

Bar: 7/8" x .035" x 24" Round Stainless Steel Tubing

Bracket: Polished Chrome Plated Zamak (Zinc/Aluminum)

Bracket: 2 1/2" x 2 1/2"

Projects: 2 11/16"

Item #555-30SS

Residential Grab Bars

Bar: 7/8" x .035" x 30" Round Stainless Steel Tubing

Bracket: Polished Chrome Plated Zamak (Zinc/Aluminum)

Bracket: 2 1/2" x 2 1/2"

Projects: 2 11/16"

Additional Lengths Available Upon Request



Item #V215-16

Stainless Steel Shelf

Dimensions: 5" x 16"

Type 304 Stainless Steel

Item #V215-18

Stainless Steel Shelf

Dimensions: 5" x 18"

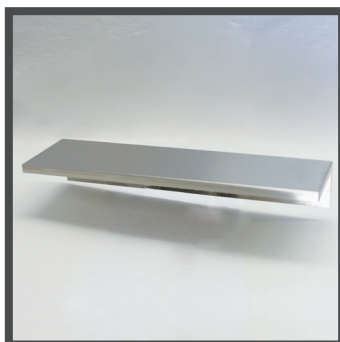
Type 304 Stainless Steel

Item #V215-24

Stainless Steel Shelf

Dimensions: 5" x 24"

Type 304 Stainless Steel



Item #V225-16

Stainless Steel Shelf

Dimensions: 5" x 16"

Type 304 Stainless Steel

Item #V225-18

Stainless Steel Shelf

Dimensions: 5" x 18"

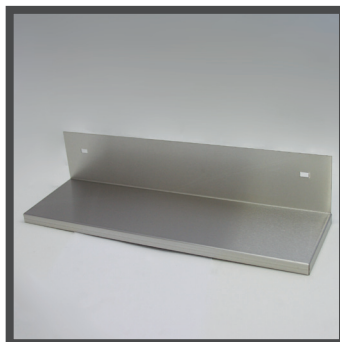
Type 304 Stainless Steel

Item #V225-24

Stainless Steel Shelf

Dimensions: 5" x 24"

Type 304 Stainless Steel



Item #V235-16

Stainless Steel Shelf

Dimensions: 5" x 16"

Type 304 Stainless Steel

Item #V235-18

Stainless Steel Shelf

Dimensions: 5" x 18"

Type 304 Stainless Steel

Item #V235-24

Stainless Steel Shelf

Dimensions: 5" x 24"

Type 304 Stainless Steel



Item #V245-16

Stainless Steel Shelf

Dimensions: 5" x 16"

Type 304 Stainless Steel

Item #V245-18

Stainless Steel Shelf

Dimensions: 5" x 18"

Type 304 Stainless Steel

Item #V245-24

Stainless Steel Shelf

Dimensions: 5" x 24"

Type 304 Stainless Steel

Additional Sizes Available



Item #V412
 24" Mop and Broom
 Holder
 Type 304 Stainless Steel
 3 ea Holders

Item #V413
 36" Mop and Broom
 Holder
 Type 304 Stainless Steel
 4 ea Holders

Item #V414
 48" Mop and Broom
 Holder
 Type 304 Stainless Steel
 5 ea Holders

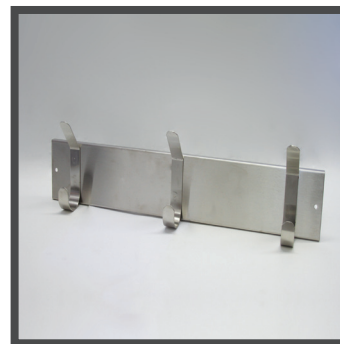


Item #V422
 30" Janitorial Shelf
 Type 304 Stainless Steel
 3 ea Mop And Broom Holders
 2 ea Hooks

Item #V423
 36" Janitorial Shelf
 Type 304 Stainless Steel
 4 ea Mop And Broom Holders
 3 ea Hooks

Item #V424
 42" Janitorial Shelf
 Type 304 Stainless Steel
 5 ea Mop And Broom Holders
 4 ea Hooks

Item #V425
 48" Janitorial Shelf
 Type 304 Stainless Steel
 6 ea Mop And Broom Holders
 5 ea Hooks



Item #V432
 24" Hook Strip
 Type 304 Stainless Steel
 3 ea Hooks

Item #V433
 36" Hook Strip
 Type 304 Stainless Steel
 4 ea Hooks

Item #V434
 48" Hook Strip
 Type 304 Stainless Steel
 5 ea Hooks



Item #V100-1830
 Stainless Steel
 Channel Frame Mirror
 Dimensions: 18" x 30"

Item #V100-1836
 Stainless Steel
 Channel Frame Mirror
 Dimensions: 18" x 36"

Item #V100-2436
 Stainless Steel
 Channel Frame Mirror
 Dimensions: 24" x 36"



Item #V190T-1830
 Stainless Steel
 Channel Frame Mirror
 Dimensions: 18" x 30"
 Adjustable Tilt

Item #V190T-1836
 Stainless Steel
 Channel Frame Mirror
 Dimensions: 18" x 36"
 Adjustable Tilt

Item #V190T-2436
 Stainless Steel
 Channel Frame Mirror
 Dimensions: 24" x 36"
 Adjustable Tilt



Item #V990-1830
 Stainless Steel
 Channel Frame Mirror
 Dimensions: 18" x 30"
 Fixed Tilt

Item #V990-1836
 Stainless Steel
 Channel Frame Mirror
 Dimensions: 18" x 36"
 Fixed Tilt

Item #V990-2436
 Stainless Steel
 Channel Frame Mirror
 Dimensions: 24" x 36"
 Fixed Tilt

Additional Sizes Available





1156 W. 135th Street Gardena, CA 90247
 Phone: 800-292-9326 310-538-9440
 Fax: 800-232-9326 310-715-9188
 cwecosales@gmail.com www.cwecoinc.com

